

# STUDIO NEWS

t h e w e s t s i d e d a n c e c e n t e r

## Spring Registration Begins...

November 23, 2015

Spring session ~ January 4 to June 18, 2016

### REGISTER NOW AND SAVE!

#### PRE-REGISTRATION

##### Continuing Students

Pre-registration for our Spring session will begin Monday, November 23, 2015 and continue to December 31, 2015. Spaces will be held in the classes your children are currently enrolled in until January 1 and you may register anytime. Pre-registration during this time is essential for all continuing students as we currently have waiting lists for some of the classes and will not hold your spot past January 1. In addition, if we do not have enough children registered for a given class by that date, it could be replaced or changed. There is **no registration fee for continuing students if tuition is paid by January 1, 2016.**

A costume fee of \$75.00 for our Spring Dance Showcase in June is also due at registration. 2 - 3 payment installments may be made during this session depending on number of classes families enroll in. A continuing student may switch to another class offered at this time (if there is space in class).

*Spaces will be held in the classes your children are currently enrolled in until January 1st...*

##### New Students

New student registration opens to the public on Monday, December 1, 2015.

First tuition payment for the Spring session and costume fees are due at time of registration. \$15.00 registration fee charged after January 1, 2016.

# OPEN



# HALLOWEEN

## CLOSING INFO...

“LIKE” us on Facebook for important updates, closings, and special events!

We receive many phone calls regarding closings. Often we don't get the messages until after the fact. If the studio is closed for any reason, there will ALWAYS be a message on the answering machine saying “The studio is closed”. If the message is our normal recording, we are open! We cannot return phone calls regarding closings.

**HOLIDAYS** All our holiday closings are posted in our brochure and in this newsletter. Also, a message will be on the answering machine the evening before so check first thing in the morning.

**INCLEMENT WEATHER** WSDC will follow the weather closings advised by the Randolph school system for safety reasons. However, it is always recommended you call the studio for any closing updates. To find out if morning classes are cancelled, call the studio by 9:00 a.m. Call by 12:00 p.m. to check on 1:30 p.m. classes and 3:00 p.m. for evening cancellations. **Or visit us on Facebook!**



facebook

## REGISTRATION POLICY!

1/2 tuition plus costume fee is due at registration.....**\$15.00 Registration fee** charged after January 1, 2016

Sorry, we no longer take deposits for continuing students.

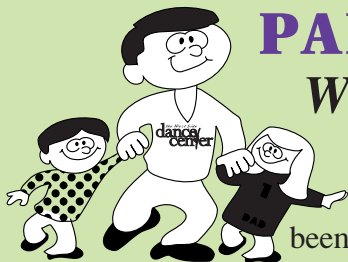
## PARENT OBSERVATION

Week of December 14, 2015

### COME ONE! COME ALL!

Now's your chance to see what your child has been doing for the past few months in dance class. If you can come, great, if not, o.k. too. The week of

December 14, 2015 is your chance to come inside the studio to watch your child learning and having fun. You may also video tape your child. There's plenty of room, so bring Grandma, Grandpa, brothers, sisters (please, no pets!) Call the studio with any questions.





## IMPORTANT DATES...

### THANKSGIVING CLOSING\*

November 26 ~ 29, 2015

### SPRING REGISTRATION

Nov. 23 ~ Dec. 31, 2015

### BRING A FRIEND TO DANCE

Dec. 7 ~ Dec. 12, 2015

### PARENT OBSERVATION WEEK

Dec. 14 ~ Dec. 19, 2015

### WINTER BREAK CLOSING

Dec. 20, 2015 - Jan. 2, 2016

### SPRING SESSION BEGINS

January 4, 2016

### *Our Staff...*

**Dale Julian-Bierce**

*Director/Dance Instructor*

**Megan Corbitt**

*Dance Instructor*

**Andrea Deventer**

*Modern Dance Instructor*

**Adam DiLoreto**

*Dance Instructor*

**Jessica Ewer**

*Office Manager*

**Brittany Hoehlein**

*Dance Instructor*

**Kristen Jackson**

*Zumba Instructor*

**Jeri LaBruna**

*Ballet Instructor*

**Laurie LaSapio**

*Dance Instructor*

**AJ Mannion**

*Dance Instructor*

**Debbie Mlceli**

*Office Administration*

**Caitlin Mugavero**

*Ballet Instructor*

**Cydney Pina**

*Dance Instructor*

**Brielle Ricciardi**

*Dance Instructor*

**Vivake Khamsingsavath**

*Dance Instructor*

**Brittany Waldron**

*Dance Instructor*



## PARENTS CORNER

### *Studio Policy Reminders*

**DANCE SHOES** appropriate to the class are required (see the teacher or director). Please don't allow children to wear their dance shoes in the street. It protects both the shoes and studio dance floor. Students arriving in their dance shoes will **not** be allowed to enter the studio.

#### **STREET CLOTHES ARE NOT PERMITTED IN DANCE CLASS.**

If your child is unprepared, please schedule a make-up class. Any style and color of dance wear is permitted however, PLEASE NOTE; no jeans, zippers, baggy t-shirts, or street shoes are permitted. **DANCEWEAR ONLY!**

**HAIR MUST** be up or pulled back. Teachers will be enforcing this dress code in the upcoming

months. If you are not sure of what the dress code is, please stop by the desk for the guidelines.

#### **ATTENDANCE & MAKE-UP CLASSES**

Regular attendance is expected from all students to keep up with class progress. If your child must miss a class, please call the studio. We will only honor make-up classes if a student has notified the studio prior to an absence. No make-up classes can be carried over sessions.

#### **LATE ARRIVALS**

A student will not be allowed to join a class more than 15 minutes late unless approved by the director prior to the class. While it is very disruptive to the rest of the class, injury prevention is the primary issue.

\* You may schedule a make-up class for these dates

#### **The West Side Dance Center**

(973) 927-4444

3 Middlebury Blvd. Randolph, NJ 07869

e-mail: westsidedance10@aol.com

www.westsidedancecenter.com